

FUV Series

HIGH PERFORMANCE ULTRAVIOLET SYSTEM

PRODUCT INFORMATION

The Filtrafine FUV Series features a compact design that incorporates a UV treatment chamber with an electrical cabinet base that contains all electrical components and instrumentation.

These compact, one-piece UV models are engineered for indoor installation and controlled operating environments.

MATERIALS of CONSTRUCTION

Shell / Flange : 316L stainless steel for liquid contacted

Cover / Legs : 304 stainless steel

Chamber & Sleeve O-rings : Viton(standard)

Perfluoroelastomer(optional)



Lamp & Ballast are CE Certified.



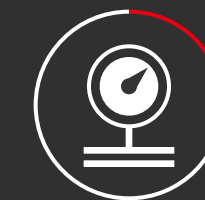
Manufactured under a certificated ISO9001 and ISO14001 quality system.



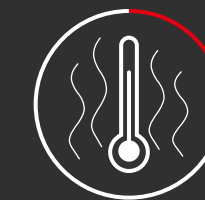
304, 316L Stainless Steel Material.



Lower maintenance and operational cost.



Maximum Operating Pressure 100 psig.



Maximum Operating Temperature 104°F(40°C).



IP54 Water Resistant.

SPECIFICATION - FUV Series HIGH PERFORMANCE ULTRAVIOLET SYSTEM

MODEL	FUV-	1HSA	1HSB	2HSB	2HSC	2HLB	2HSD	2HLC	2HLD	4HLC	6HLC	5HLD	6HLD	8HLD	8HLE	8HLF	8HLG	10HLG	12HLG	12HLH
MAXIMUM FLOW RATE																				
DISINFECTION @ 94% UVT GPM (CMH)*		19 (4.5)	23 (5.3)	39 (9)	61 (14)	79 (18)	92 (21)	136 (31)	189 (43)	228 (52)	295 (67)	396 (90)	449 (102)	541 (123)	686 (156)	836 (190)	924 (210)	1127 (256)	1320 (300)	1444 (328)
DISINFECTION @ 99% UVT GPM (CMH)*		21 (4.8)	25 (5.8)	44 (10)	70 (16)	88 (20)	114 (26)	158 (36)	228 (52)	268 (61)	347 (79)	484 (110)	550 (125)	660 (150)	907 (206)	1153 (262)	1360 (309)	1620 (368)	1800 (409)	2192 (498)
NUMBER of UV LAMPS		1	1	2	2	2	2	2	2	4	6	5	6	8	8	8	8	10	12	12
ELETRICAL REQUIREMENTS																				
ELETRICAL SUPPLY		220V/50-60Hz, SINGLE PHASE, 2W + GND																		
OPER. POWER (NOMINAL WATTS)		235	440					760	1080			1400			1720	2040				
CONTROLLER / DETECTOR																				
CONTROL CABINET		PAINTED STEEL																		
LED LAMP STATUS INDICATOR		STANDARD																		
TIME METER		STANDARD																		
LAMP OUT ALERT (LOA)		STANDARD																		
SENSOR (4~20mA SIGNAL)		OPTIONAL																		
TREATMENT CHAMBER																				
MATERIALS of CONSTRCTION		316L STAINLESS STEEL for LIQUID CONTACTED																		
INTERNAL SURFACE FINISH		Ra 32 (Ra 15 OPTIONAL)																		
OPERATING TEMPERATURE °F (°C)		WATER: 40° - 104° (5° - 40°) AMBIENT AIR: 34° - 104° (1° - 40°)																		
MAX. OPER. PRESSURE (PSI)		100																		
INLET/OUTLET FLANGE DIMENSION		1"	1.5"	2"			3"			4"			6"			8"			10"	
HOT WATER SAINT. °F (°C)		176° (80°)																		
INLET/OUTLET FITTING		STANDARD: ANSI OPTIONAL: JIS, MPT, SANITARY, DIN																		

* Dose Level: 30 mJ/cm² after 9,000 hours of operation.